

Henry Robertz

attended the University of Minnesota, School of Journalism, for two years and then graduated from the Minneapolis School of Art. He worked as a designer in both Minneapolis and Chicago before joining Whitaker Guernsey as vice president and design director. Robertz established his own design firm in 1965. He is a former director of the STA and past chairman of *27 Chicago Designers*.



stop
and
think
about what
has to be
done
with



Gray & Thomas, Inc.
 Gray & Thomas, Inc. is a highly diversified construction and real estate development firm. The firm is currently engaged in a number of major construction and real estate development projects in the Chicago area. The firm's services include architectural design, engineering, construction management, and real estate development. The firm's offices are located in Chicago, Illinois.

Libelle Properties, Inc.
 Libelle Properties, Inc. is a real estate development and construction firm. The firm is currently engaged in a number of major construction and real estate development projects in the Chicago area. The firm's services include architectural design, engineering, construction management, and real estate development. The firm's offices are located in Chicago, Illinois.





Left: mark for Armco Industries.

Brochure for IC Industries real estate group.

Mark for Chicago Bridge and Iron Company. Background shape is a Hortonsphere, a basic part of the company business in storage tanks and named after the former chairman of the board.

Packaging for Jovan.

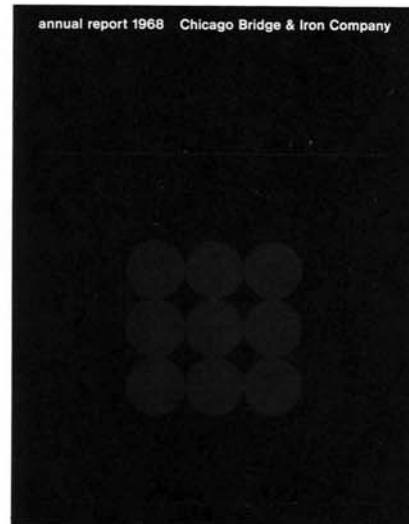
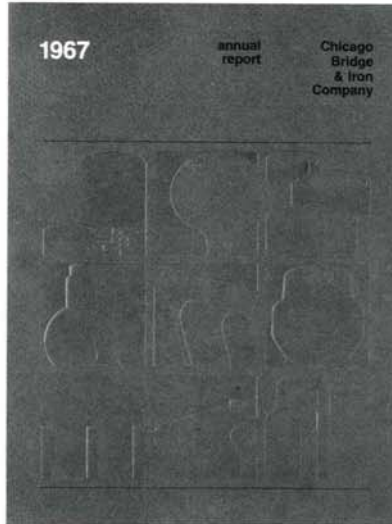


HENRY ROBERTZ

Three of the eight consecutive years of annual reports for Chicago Bridge & Iron Company.

Annual report for Zenith.

Right: annual reports for McDonald's.



CBI is a world-wide fabricating and contracting firm with the ability to research, design, engineer and build virtually any metal plate structure.

The company's most spectacular accomplishment of 1972 was completion of an advanced underwater oil storage storage 50 miles off the coast of Dubai, United Arab Emirates. In mid-August, the third 100,000 barrel capacity, turret storage underwater storage tank was set in place. All three of the 20 story high structures are independent, operating on the water displacement principle. They were built on above and below not to see as a surface of air. (Photo on inside front cover.)

CBI builds many structures that store large volumes and frequently value on the surface of structures to "accept" large amounts of product into a compact vessel. The company offers valid customers single responsibility handling of the design and building of facilities for the separation, storage and removal of various gas, propane and many other gases which can be stored in a composite or independent state. CBI's "in-house" package includes the storage tank, systems equipment, piping, controls and vessel building and transporting. (Photo on page 6.)

The LNG loading pier CBI built at Amsted, Georgia (photo on page 10) features the world's largest refrigeration system and holds the liquid equivalent of 10 million cubic feet of gas. This is one of a standard CBI line of modular storage systems which can be built quickly and economically.

Many of CBI's largest construction projects are tied to the burgeoning world-wide demand for energy. In industrialized countries the need for electrical power doubles every 10 years and even more dramatic growth occurs in many emerging nations. CBI stands ready to help meet these needs, whether hydroelectric plants or nuclear facilities are chosen for an area's power needs.

As a leading fabricator and constructor of penstocks, tunnel liners, scroll cases and other steel components of hydroelectric plants, CBI was a major contributor to the construction of important hydroelectric projects from Grand Coulee, Washington to Turkiye, West Pakistan.

Last year at Turkiye, where the world's largest dam is being built, CBI installed four tunnel liners that are up to 17 1/2 feet in diameter, 47,000 feet long and 1,000 to 1,500 feet long inside the huge tunnels that will divert the waters of the Taurus River to irrigate adjacent farmland and supply the electric power for industrial development. Liner lining equipment CBI loan were cut and formed in a large fabrication plant set up on the site, and then delivered from the facility just to the tunnels about a quarter of a mile from the dam. The company built mobile processing plants to make the oxygen and acetylene used in cutting and preheating.



1972 annual report

To Zenith stockholders:

We are pleased to report record sales and earnings for 1972.

Sales for the year were \$796 million, an increase of \$183 million, or 30%, from the \$613 million reported for 1971; and 13% above the previous sales record of \$705 million established in 1968.

Earnings in 1972 were \$48.6 million, or \$2.55 per share, an increase of 55% over the operating earnings of \$31.3 million or \$1.65 per share, excluding extraordinary income, reported for 1971. Earnings in 1972 were 3% above the previous record of \$47 million reported in 1968.

Sales of color television receivers, Zenith's major product, exceeded

Manufacturing and Material

Zenith's Manufacturing Division was challenged this year to meet Manufacturing's demand for the accelerated introduction of all-steel color television sets, and the replacement of each system to an electronic being, automatic line building control, and a Zenith-designed magnetic storage register to save costs. At the same time, architectural capacity was enhanced to meet the demand for Zenith products to rise sharply during the year. These challenges led to an increase in the same time for quality control system. New color features were being built into the design, manufacturing and testing stages.

These challenges were met by increasing production capacity, installing new automatic equipment, using new testing facilities, and the hiring of new employees.

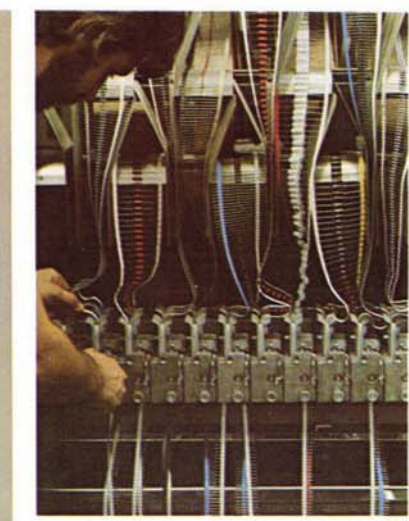
All Plant 2 in Chicago's major investment was made to meet customer requirements which will allow the company to deliver the most highly processed and complete production capability. This computer-controlled equipment automatically controls temperature, moisture, humidity, and other environmental conditions. Computer-controlled building equipment for Plant 2 is a solid state system of Plant 2.

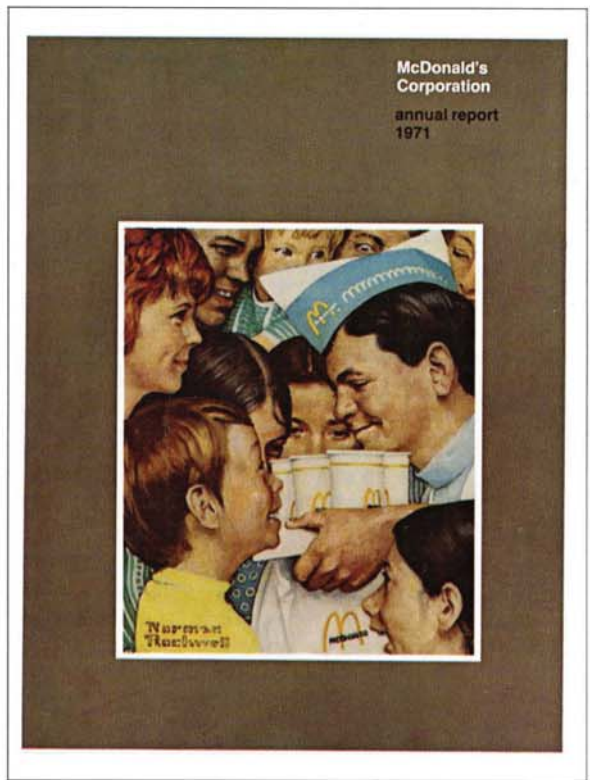
New and improved production of color sets from Plant 2, Michigan, magnetic storage registers, receive control circuit for TV, and other major equipment of Plant 2 are producing more than 1,500 units per day. By the operation of 100 new employees, 1,000 employees will be added to the production work force.

New equipment was installed at Zenith's Michigan Plant to increase its color tube production. This equipment includes a new production line equipped with a new generation of production line. This equipment will produce the color tube production line.

New employees were hired and trained to work in assembly lines in other production areas of plant facilities in the U.S. and other countries. Line and staff managers were selected to the positions to handle their base of responsibility in the different manufacturing processes. Through training and staff selection, Zenith's Manufacturing Division is building a world-class production line.

In addition to the production line, the Manufacturing Division was reorganized to bring all highly trained





The year-end results of your Company...
The three areas covered in this report are: the financial position of the Company, the progress made in expanding the Company's operations, and the progress made in developing the Company's products.

The three areas covered in this report are: the financial position of the Company, the progress made in expanding the Company's operations, and the progress made in developing the Company's products.

We will continue to offer high quality products and services, with the same commitment to service, cleanliness, and friendliness, and the foundation of our success. Our commitment to service through the golden arches is a promise to our customers, and we will continue to work hard to ensure that this promise is always kept.

At McDonald's, we are proud to offer a variety of products that meet the needs of our customers. Our menu is constantly evolving, and we will continue to work hard to ensure that our menu is always fresh and delicious.

Bar charts showing financial data for 1971 and 1970, including Sales, Operating Income, and Net Income.

